



INSOLVENCY REPORT

A closer look at company insolvencies across the
glazing & wider construction industry.

DECEMBER 2024

WWW.INSIGHTDATA.CO.UK



EDITOR'S NOTE

Welcome to this special edition of the Insight Data's monthly Insolvency Report which marks one year since we officially started sharing an exclusive look into the state of the industry.

As we begin a new year, we're beginning by reviewing the end of 2024 and encouragingly can see that insolvencies did in fact dip in December, despite very low expectations for growth across the board.

So, what is the latest data telling us? Our analysis shows that only Builders' Merchants saw a month-on-month increase in insolvencies, with seven firms going under in December compared to six the previous month.

While there were still insolvencies across the board, the figures have certainly slowed compared to some of the rapid increases we saw last autumn. For instance, 24 architects or architects' firms became insolvent in December, a substantial drop of 37% from November's total of 38.

Our research also revealed that just four main contractors went out of business in December, compared to November – an incredible reduction of 43%. Among local builders there was a slight drop of 11% as 102 went bust in December, compared to 115 in the previous month.

However, no change was noted for fabricators and installers in December as 97 insolvencies were declared – the same number as reported in November.

What does this mean? Is this slowdown in insolvencies a sign of what's ahead? Or will the increases to National Insurance for employers and other financial measures introduced in April be the straw that broke the camel's back? One thing is certain, we know that this year will be a pivotal one for world economies and as it unfolds you will need to not only stay up to date with the latest happenings from our sector but you must also have a strong sales and marketing strategy to stay ahead.

At Insight Data, we provide our industry with the insights needed to navigate these challenging times and the data to acquire new leads. If you want to be fully prepared for the Budget changes coming next April, sign up to a seven-day free trial of our online sales and marketing platform today. [CLICK HERE](#) to see how we will partner with you to achieve efficiency and growth for your business.

Kirsty Winter
General Manager, Insight Data.

Note: Figures presented encompass data from December 2024 and from third party references.*

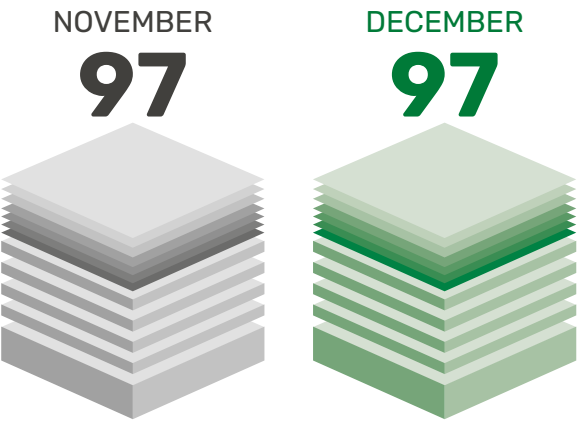


INDUSTRY SNAPSHOT

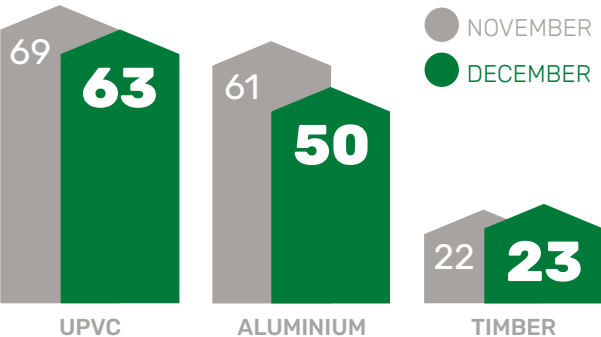
IN TOTAL, **234** COMPANIES HAD THEIR COMPANY STATUS AMENDED AS DISSOLVED, IN LIQUIDATION, WOUND UP, OR CEASED TRADING.



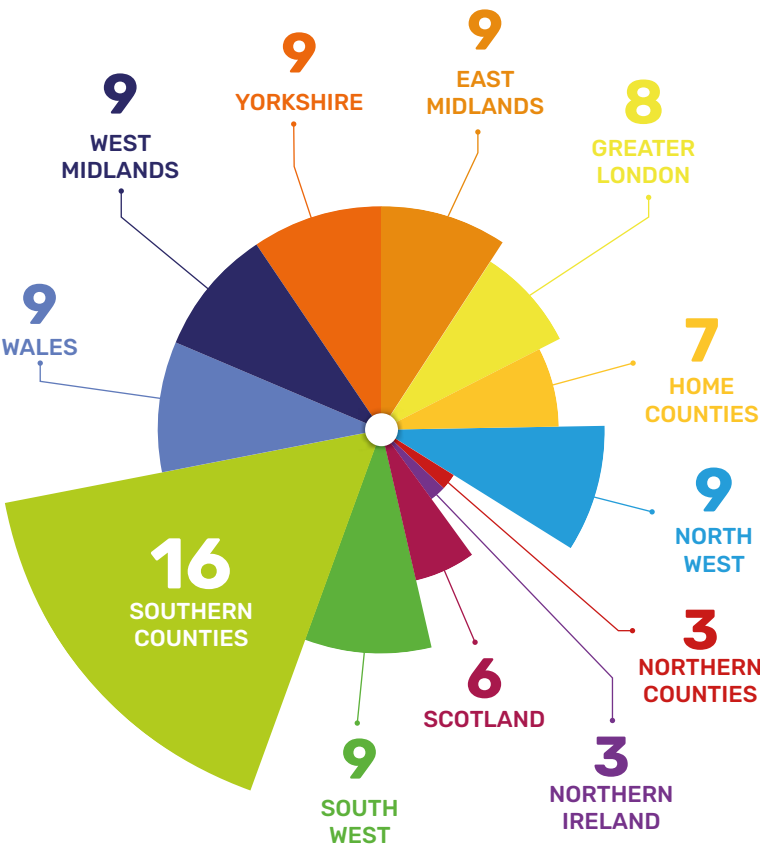
TOTAL NUMBER OF FABRICATORS & INSTALLERS INSOLVENCIES



BY MATERIAL



FABRICATOR & INSTALLER INSOLVENCIES PER REGION



ARCHITECTURAL PRACTICES INSOLVENCIES

NOVEMBER **38**

DECEMBER **24**

INSOLVENCIES IN DEC = 7



BUILDERS MERCHANTS

INSOLVENCIES IN NOV = 6



LOCAL BUILDERS INSOLVENCIES:

NOV **115**

DEC **102**



MAIN CONTRACTOR INSOLVENCIES DECREASED FROM 7 IN NOVEMBER TO

4

IN DEC

Insolvency data is provided by a third party credit reference agency. Note: Figures presented encompass data from December 2024.



Market Intelligence for the UK Fenestration Industry

The UK glazing and wider construction industries are navigating a complex future filled with both challenges and opportunities. These businesses need to make informed decisions quickly and efficiently to navigate this complexity.

Our cloud-based, live data platform Salestracker, is a market intelligence goldmine that provides businesses with the insights they need to succeed.

Simply log in to access:



Glazing
Manufacturers
& Installers:
20,900
contacts



Local Builders
Database:
27,600
contacts



Construction
File: **6,900**
contacts



Architects
Database:
17,900
contacts



Builders'
Merchants
Database:
12,100
contacts

Discover why sales and marketing teams from over 2,000 suppliers already trust Insight Data for exclusive, in-depth information, not available anywhere else. Our comprehensive databases include product/sector insights, key decision-makers, and financial data, providing the ability to monitor market trends, identify new business opportunities, and mitigate risks and costly setbacks.

CLICK HERE to arrange your free 7-day trial of Salestracker. Contact us at **hello@insightdata.co.uk** or call **01934 808293**.



ISO 9001 Certified

Built upon the UK's most comprehensive glazing and construction data, Insight Data has earned the trust of esteemed bodies such as the GGF, leading media outlets, and holds ISO9001 certification.

Disclaimer

This report incorporates information from a third-party credit reference agency, cross-verified on Salestracker by our in-house research team. We validate company status changes, like new registration numbers, promptly on Salestracker, though it may not be reflected in this report. Insight Data disclaims responsibility for the third-party agency's data accuracy.