



INSOLVENCY REPORT

A closer look at company insolvencies across the
glazing & wider construction industry.



EDITOR'S NOTE

Welcome to the eleventh edition of Insight Data's monthly Insolvency Report. Unfortunately this month, almost across the board, insolvencies in the building construction and fenestration sector are up.

It's been a month since Labour's controversial financial statement was announced and although we can't make any direct links between the Budget and the industry's latest insolvency figures, we can't ignore that this could have played a part in November's data.

Our analysis shows that there has been an 133% increase in the number of main contractors going under, with the numbers jumping from three in October to seven in November. The picture for small builders, fabricators and installers in the fenestration sector is similarly bleak. In fact, in November 115 local builders went bust (an increase of 35% on October's figure of 85) and 97 fenestration fabricators and installers went out of business – a 43% rise when compared to October. The data also highlights that 38 architect firms went into administration in November which is up 52% from 25 since October.

Builders' merchants are the only group to see a reduction in insolvencies, with just six reported in November - which is an incredible 72% drop from the 21 noted in October.

As we approach the end of 2024, the future does unfortunately look bleak. Have firms been spooked by the autumn Budget and the number of challenges it will introduce? Has the rise in National Insurance contributions, the increase in minimum wage and the drop in discount in business rates persuaded business owners to act now before April 2025? While it's difficult to say for certain, it's not surprising if this is the case.

The National Insurance rise is going to have a massive impact on businesses of all shapes and sizes and is likely to result in a spike in insolvencies throughout 2025 as companies take stock, cut back or choose to close altogether.

Next year is set to be a year of significant change and potential challenges. However, with reliable insights, quality marketing data and data-driven strategies businesses in the construction and fenestration industry can overcome these difficulties.

At Insight Data we're here to help. Our marketing data and specialist CRM software enables businesses to make informed new business decisions and build resilience during economic uncertainty. As the UK approaches the upcoming budget changes in April, partnering with Insight Data can drive growth for your business.

Ready to tackle 2025 head on? Sign-up to a seven-day free trial of our online sales and marketing platform today. [CLICK HERE](#) to discover how our team of data specialists can help you achieve fantastic marketing results next year.

See you in 2025,

Kirsty Winter
General Manager, Insight Data.

Note: Figures presented encompass data from November 2024 and from third party references.*

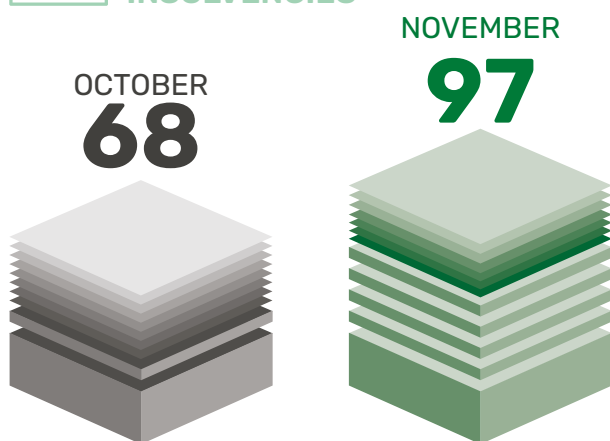


INDUSTRY SNAPSHOT

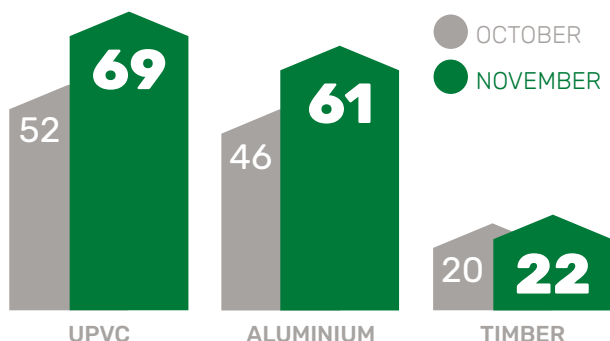
IN TOTAL, **263** COMPANIES HAD THEIR COMPANY STATUS AMENDED AS DISSOLVED, IN LIQUIDATION, WOUND UP, OR CEASED TRADING.



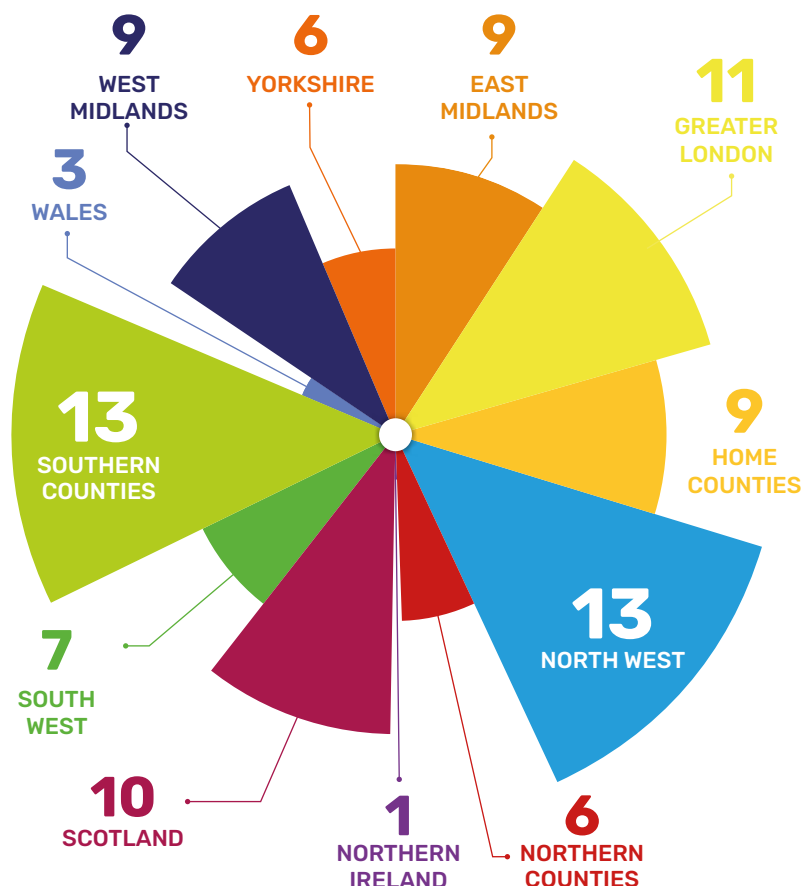
TOTAL NUMBER OF FABRICATORS & INSTALLERS INSOLVENCIES



BY MATERIAL



FABRICATOR & INSTALLER INSOLVENCIES PER REGION



ARCHITECTURAL PRACTICES INSOLVENCIES



INSOLVENCIES IN NOV = 6



INSOLVENCIES IN OCT = 21



LOCAL BUILDERS INSOLVENCIES:



MAIN CONTRACTOR INSOLVENCIES INCREASED FROM 3 IN OCTOBER TO



Insolvency data is provided by a third party credit reference agency. Note: Figures presented encompass data from November 2024.



Market Intelligence for the UK Fenestration Industry

The UK glazing and wider construction industries are navigating a complex future filled with both challenges and opportunities. These businesses need to make informed decisions quickly and efficiently to navigate this complexity.

Our cloud-based, live data platform Salestracker, is a market intelligence goldmine that provides businesses with the insights they need to succeed.

Simply log in to access:



Glazing
Manufacturers
& Installers:
20,900
contacts



Local Builders
Database:
27,600
contacts



Construction
File: **6,900**
contacts



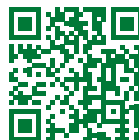
Architects
Database:
17,900
contacts



Builders'
Merchants
Database:
12,100
contacts

Discover why sales and marketing teams from over 2,000 suppliers already trust Insight Data for exclusive, in-depth information, not available anywhere else. Our comprehensive databases include product/sector insights, key decision-makers, and financial data, providing the ability to monitor market trends, identify new business opportunities, and mitigate risks and costly setbacks.

CLICK HERE to arrange your free 7-day trial of Salestracker. Contact us at **hello@insightdata.co.uk** or call **01934 808293**.



ISO 9001 Certified

Built upon the UK's most comprehensive glazing and construction data, Insight Data has earned the trust of esteemed bodies such as the GGF, leading media outlets, and holds ISO9001 certification.

Disclaimer

This report incorporates information from a third-party credit reference agency, cross-verified on Salestracker by our in-house research team. We validate company status changes, like new registration numbers, promptly on Salestracker, though it may not be reflected in this report. Insight Data disclaims responsibility for the third-party agency's data accuracy.